



# BENEFITS OF THE SYSTEM

**10 times stronger**  
than a traditional  
aluminum fence

**NO digging**

**NO mess**

**Easily adjustable**

**Easily repairable**

**Quick 1 day**  
**installation on**  
most projects

**Works with all**  
**standard 2x2 .062**  
**and .080 thick and**  
up to .10 thickness.



# NO DIG SYSTEM

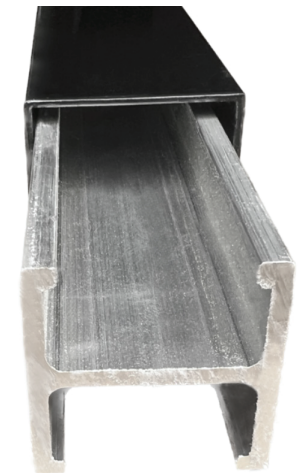
**STRONGER QUICKER CLEANER**

The two types of posts are I-Post No Dig Insert (for gate, end, line, blank posts) & L-Post No Dig Insert (corners only). All no dig posts are a hefty .125 thick.

## I-POST NO DIG INSERT

Aluminum  
fence line, gate  
or end post

**FITS** .060 and .080  
wall 2x2 square  
LINE, END, GATE  
and BLANK  
posts only



## L-POST NO DIG INSERT

2" Aluminum fence corner post  
6005A-T5 heat treated

**FITS** .060 and .080  
wall 2x2 square  
CORNER posts only  
(post not included)

